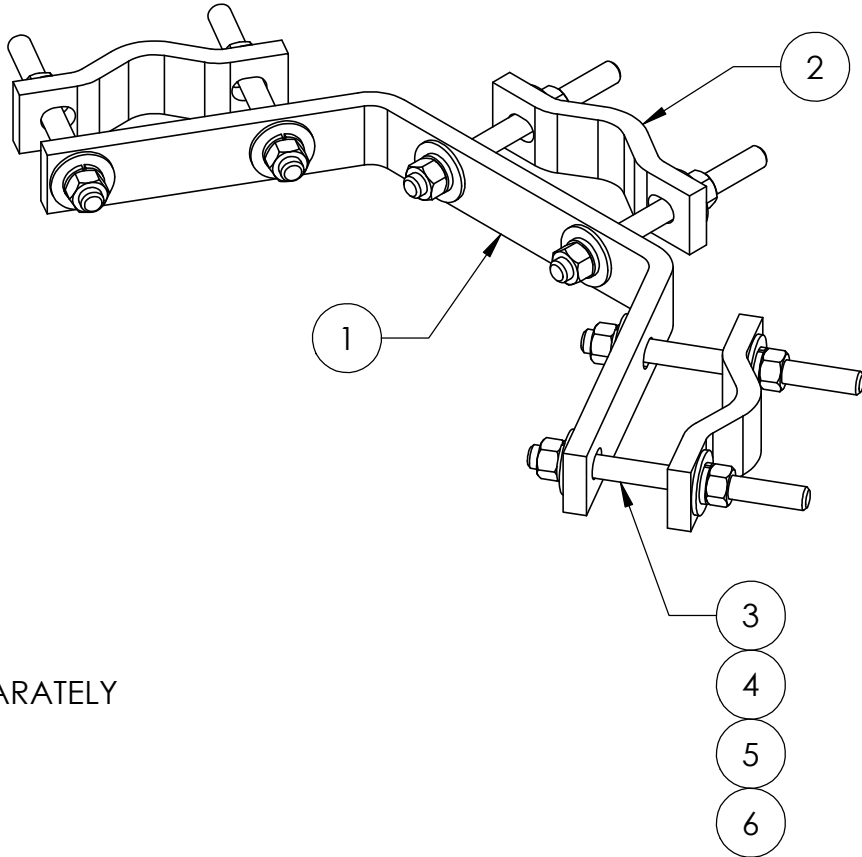
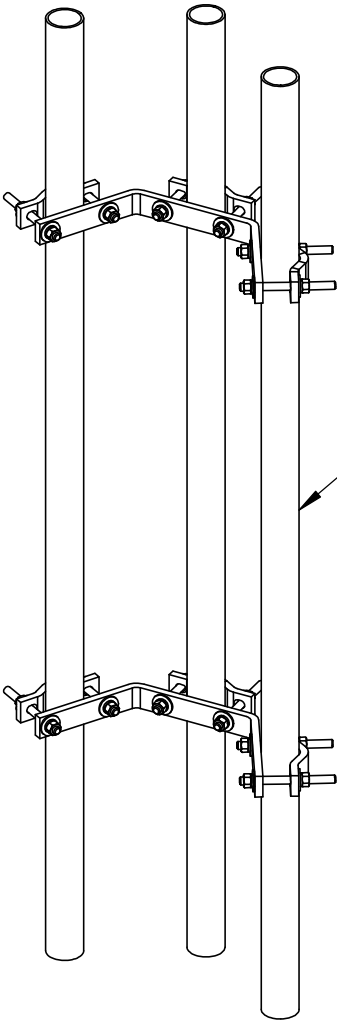
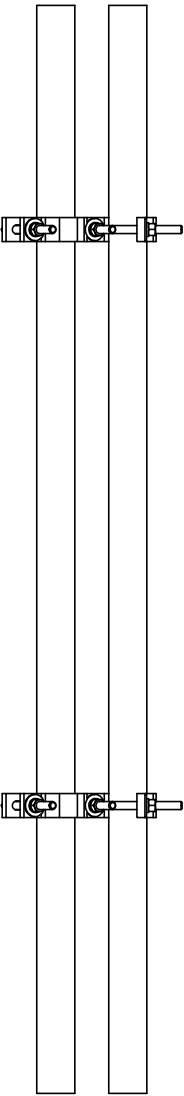
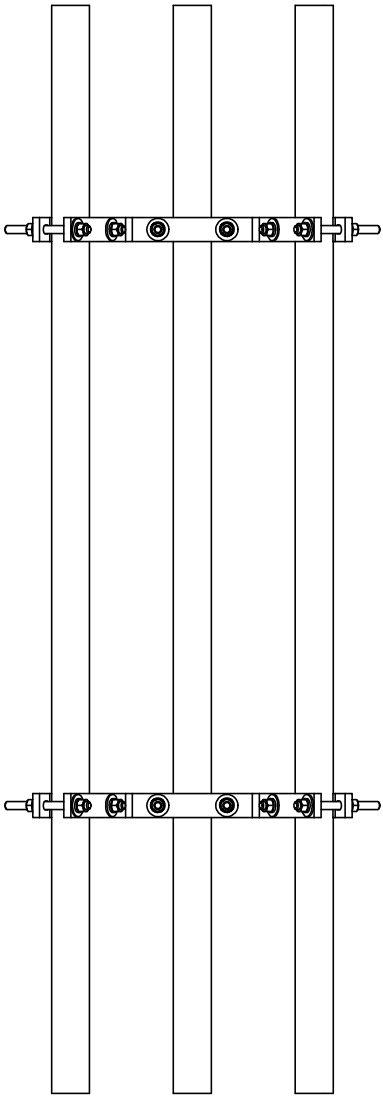
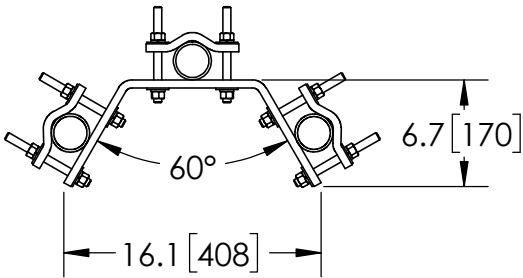



ITEM	PART NO.	DESCRIPTION	QTY.	WEIGHT
1	DAC2	DOUBLE ANTENNA CLAMP	2	4.55 LBS
2	SCP10	1.5" - 3.5" O.D. CLAMP HALF	6	1.21 LBS
3	GD04600	1/2"-13 UNC x 6" Galv Threaded Rod (A307)	12	0.33 LBS
4	GWF04	1/2" GALV USS FLAT WASHER	24	0.04 LBS
5	GWL04	1/2" GALV LOCK WASHER	24	0.01 LBS
6	GN04	1/2-13 UNC GALV HEX NUT (Gr.5)	24	0.04 LBS

REVISIONS				
REV.	ZONE	DESCRIPTION	BY	DATE
A		INITIAL RELEASE	MLL	01/12/00
B		REVISED & REDRAWN	LAP	04/01/01
C		PRODUCT REDESIGN	AW	12/05/06
D		CHANGED HARDWARE	AW	12/11/06
E		SWITCH FROM U-BOLT TO SCP10	ACG	05/26/22



NOTES:
1. ALL METRIC DIMENSIONS ARE IN BRACKETS.

These drawings and specifications are proprietary property and may be used only for the specific purpose authorized in writing.	DRAWN BY: ACG	SHEET: 1 of 1	PART NUMBER: FM-DAC200
	CHECKED BY: MKV	SCALE: NTS	DESCRIPTION: DOUBLE ANTENNA CLAMP KIT
ALL DIMENSIONS ARE IN INCHES U.O.S. TOLERANCES UNLESS OTHERWISE SPECIFIED: .X = ± .06 ANGLES ±2° .XX = ± .03 FRACTIONS ±1/32 .XXX= ± .010 REMOVE BURRS AND BREAK EDGES .005	DATE: 01/12/00	MATERIAL: ASTM A36	DRAWING TYPE: ASSEMBLY DRAWING
	REVISION: E	FINISH: ASTM A123	
DO NOT SCALE THIS PRINT		WEIGHT 21.56 LBS	